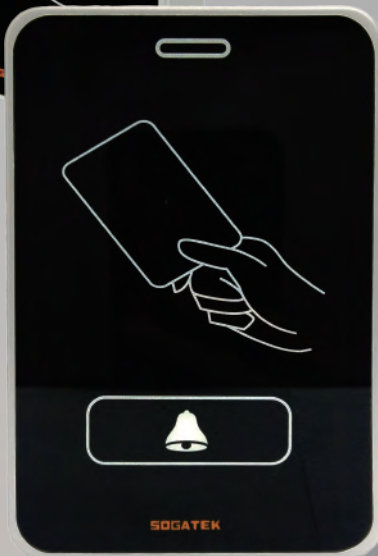




IS-A201M



IS-A201BM

IS-A201M Mifare Access Controller

Door-bell button(Option IS-A201BM)

RS-485 Communication Interface.

Illuminative keys.

Supporting WG port for anti-pass-back function.

TTL serial output for various application and lift control.

Selectable working frequencies: 13.56MHz.

User capacity : 6,000 ; Event logs : 10,000.

Management mode : Engineering mode \ Manager mode.

Confine Mode : Card only.

Built-in Real Time Clock & Anti-Tamper functions.

Including the input of door contact, offering the alarm system of both door opening too long and being forced to open.

9 sets of Auto-Open Zone editable.

Built-in Multi-Output : Door Lock / Alarm / Arming / Duress.

Coordinating with softwares for further application on access control, time attendance, payroll, and door / sensor image-monitor function.

3 color LED and 1 beeper for identification.

Buzzer volume adjustment.

Adjustable sensing frequency in metal environment.

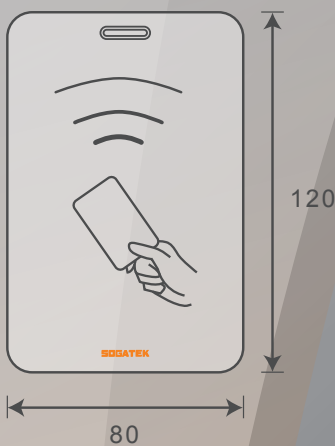
Anti-copy authentication function.





IS-A201M

■ Dimensions (mm)



■ Product Specification

Frequency	13.56MHz : 2-8cm
Power supply	9-24VDC (<2W)
Standard	13.56MHz : ISO14443A
Reading Range	13.56MHz : 2-8cm
Communication Interface	RS-485
Data Transfer Rate	4800/ 9600(Default)/ 19200/ 57600/ 115200(N,8,1)
Operating Temperature	- 20°C to +70°C
Digital Input	Egress(R.T.E) x1 / Door contact x1
Relay Output	Lock Relay
Lock Relay Time	Toggle , 0.1-600 Sec.
Alam Time	Toggle , 1-600 Sec.
Tamper Switch	Limit Switch
User Capacity	6,000
External Reader	1 WG Port
Anti-pass-back	Yes
Lift Control	104 Floors (Option AR-401RO16B)
Serial Port	Yes
Real Time Clock	Yes
Infrared input	Yes (Option)
Indicator	3 Color LED+1 Beeper
Keypad Material	9H Tempered Glass
9H Tempered Glass	ABS
Time Zone	9
Color	Black
Dimensions(mm)	120(L) x 80(W) x 18(H)
Weight(g)	100 ± 10

